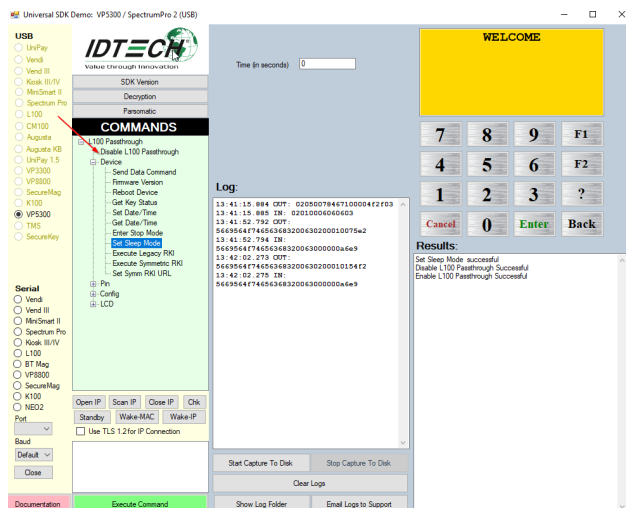
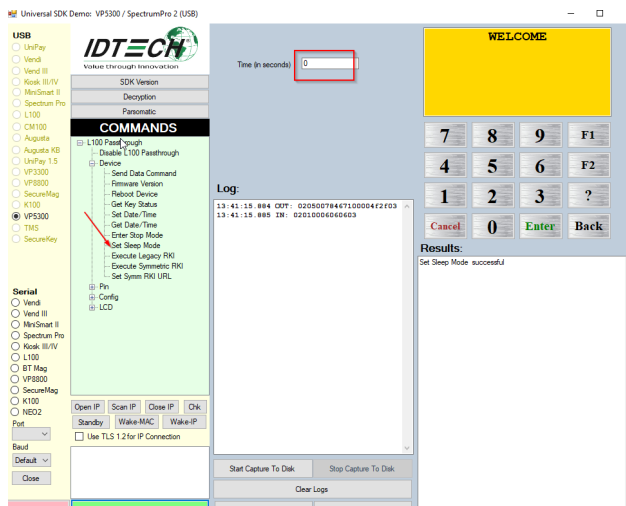
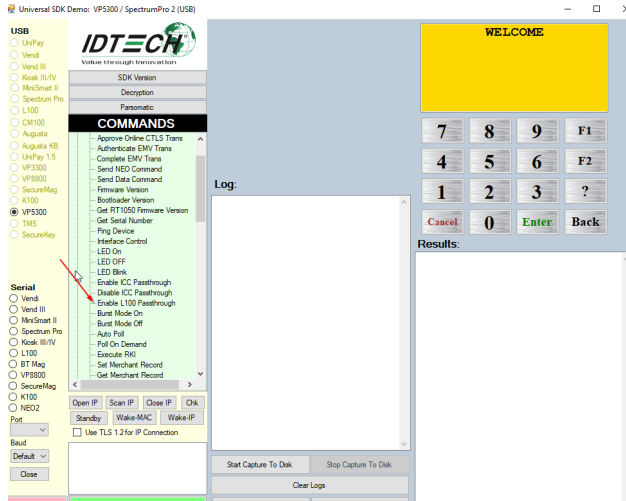


What are the steps to update L100 firmware?

You can update L100 firmware using IDTechBootload application. (usually included in VP5300 firmware package)

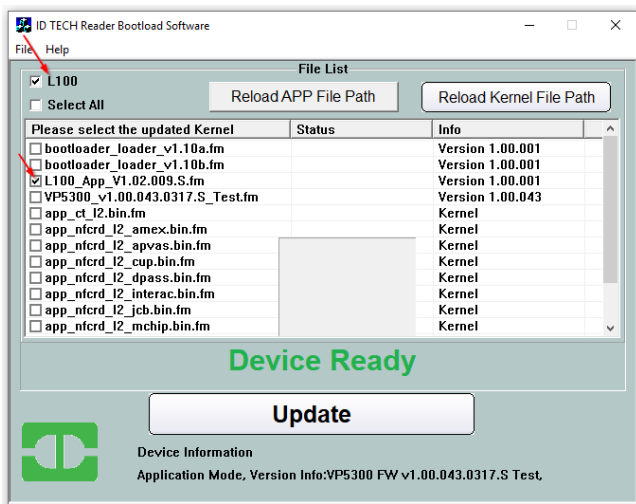
1. make sure L100 reader does not go into sleep mode.



2. Save L100 firmware file at Firmware App folder and only update L100 firmware file

top > VP5300 > SRED > VP5300 v1.00.043.0317.S Test > FirmwareApp

<input type="checkbox"/>	Name	Date modified	Type	Size
<input type="checkbox"/>	bootloader_loader_v1.10a.fm	3/22/2019 4:52 PM	FM File	79 KB
<input type="checkbox"/>	bootloader_loader_v1.10b.fm	3/22/2019 4:51 PM	FM File	79 KB
<input type="checkbox"/>	L100_App_V1.02.009.S.fm	5/16/2019 2:25 PM	FM File	194 KB
<input type="checkbox"/>	VP5300_v1.00.043.0317.S_Test.fm	3/22/2019 4:41 PM	FM File	1,125 KB



p. sometimes, you see device not in bootloader mode, please close the software and relaunch it again.